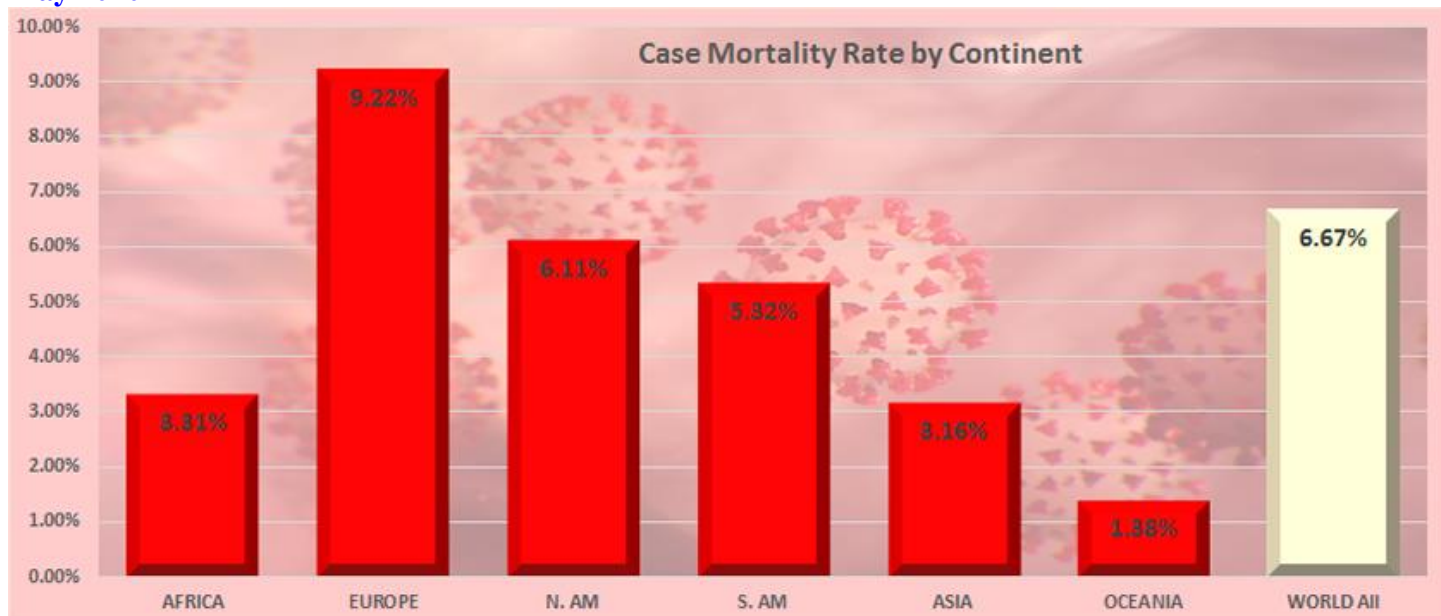


We haven't had a look at the graphs for a while but as it is now a little over 13 months since the pandemic started to really take hold, it's probably a good time to do so.

CMR by continent

Back in the early days, these numbers were much higher. In May last year, the global average was 6.67% with Europe the worst at over 9% but by December last year those numbers were down to a 2.23% global average and South America was the worst at 2.84%. The global average hasn't dropped much more but there now isn't a lot of variation across the other continents except Asia which is possibly understated.

May 2020



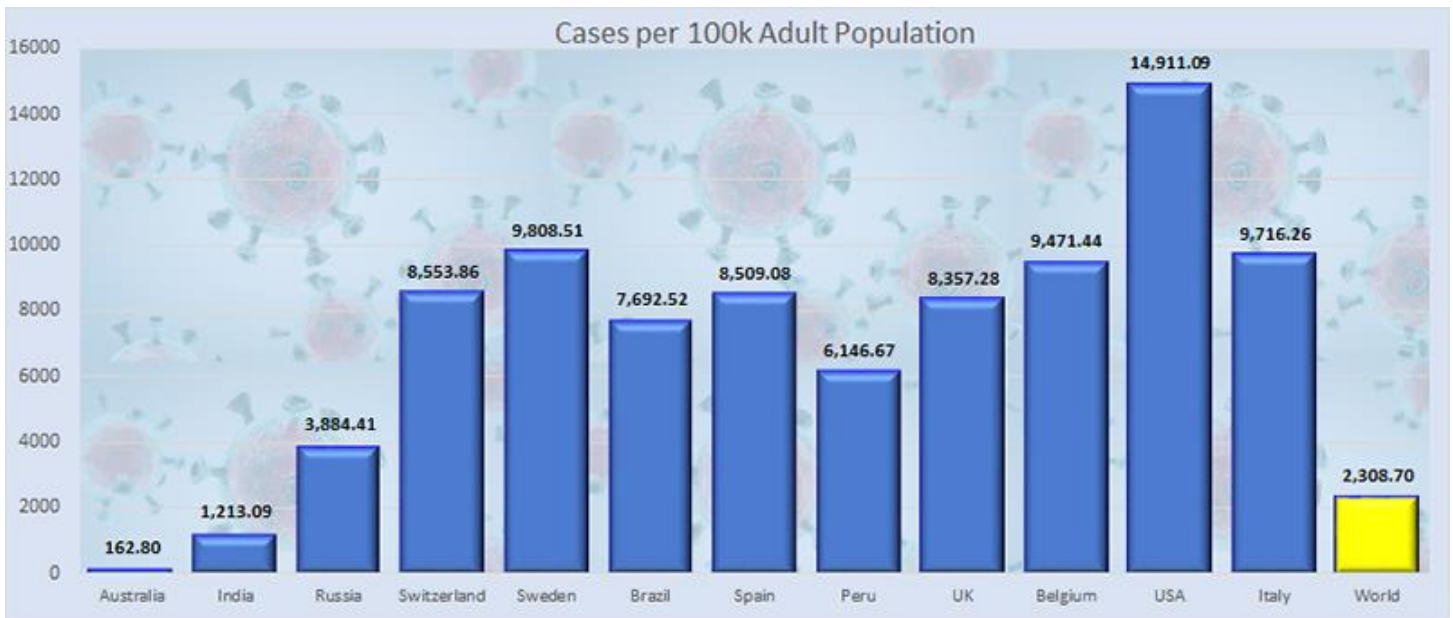
Now



Cases per 100k Adult Population

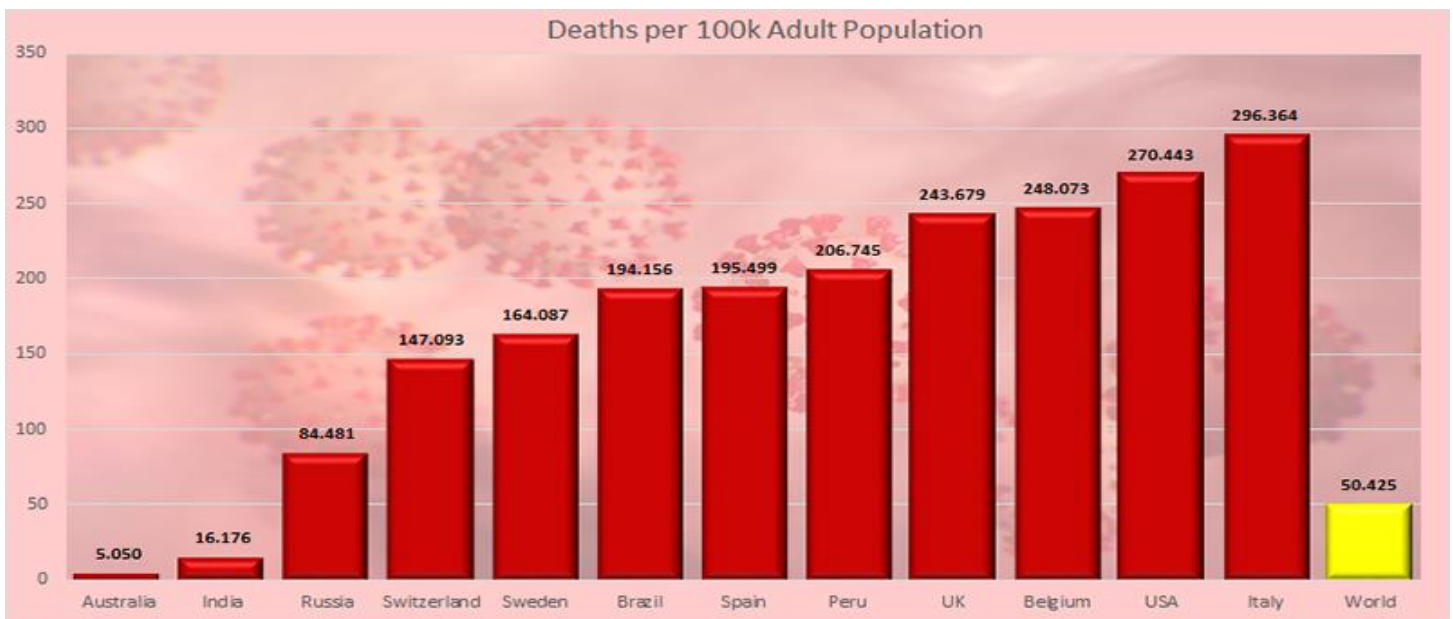
Not much point looking back at the old charts as these are obviously going to just keep increasing. However, back in May last year the global average was 40.1/100k with Spain and Italy the worst at 494 and 467 respectively.

The global average is now 2,308/100k and the USA is well out in front on 14,911/100k followed by Sweden with 9,808/100k. Australia is fractionally under 163/100k.



Deaths per 100k Adult Population

Back in May last year, the global average was a little over 2.7/100k and Italy had the worst numbers with 61/100k followed by Belgium with 55/100k. Again, those numbers will obviously increase and the global average is now 50.4/100k and Italy still has the worst numbers (excluding tiny countries) with 296/100k but the USA is now the next highest with 270/100k. Australia is fractionally over 5.0/100k.



CMR by Country

There is still a wide disparity in the case mortality rates some of which will still be based on the quantity of testing done but it really should have stabilised by now.

Back in mid-May last year, the global CMR was 6.85% with Belgium (14.3%), France (13.1%) and Italy (13.1%) having the worst numbers. Australia was just on 1%.

By November, the global average was down to 2.37% with Peru (3.7%), the UK (3.68%) and Italy (3.61%) the worst but Australia had bucked the overall trend and had risen to 3.26%.

As it stands now, the global average has fallen slightly, now 2.18% while Peru 3.36%, Australia (3.1%) and Italy (3.305%) are amongst the worst.



The final two charts depict the rates of global case growth and mortality by looking at how many days elapse between each milestone - in this instance each 1M new cases and 50k new deaths.

